



**Griffith
Memorials**

THE
Memorial
COLLECTION

THE *Memorial* COLLECTION

Most of us at some time in our life are faced with the painful task of choosing a suitable memorial for a loved one. The memorial you choose will forever honour the life of someone you love.

In this brochure you will find memorials that have been designed by our artists and are unique in their carvings. Trying to decide on the type of memorial you require can be a difficult and emotional decision.

There is no limit to the type of monument that can be produced and all the memorials can be adjusted to suit a particular requirement. Any design can often be incorporated into another and as memorial manufacturers we can design any memorial that is not shown in this brochure.

The careful training of our staff ensures that they are able to provide you with the kind of help and assistance you may need. It is important to bear in mind that cemetery and churchyard authorities nearly always have regulations as to the type of memorials they will allow; however, we are aware of these and can advise you accordingly.

We can assist you in the layout of the inscription and we guarantee that all our memorials are of excellent workmanship and sound materials.





Contents

What Makes a Memorial?	4
Placing the Order	5
The Materials	6
Responsibility for Memorials	7
Your guide to: Inscriptions	8
The Memorial collection	16
Memorials - Stone colours	76
Memorials - Stone types	77
All available memorials	78

What Makes a Memorial?

This refers to memorials usually erected in cemeteries or churchyards.

These need to be of a material that:

- **will withstand the weather**
- **can take a lasting carved inscription (and maybe more later on)**
- **is suitable for shaping and ornamentation**
- **time has shown that natural stone (i.e. stone, slate, marble and granite) has all these qualities.**

Choosing a memorial

Because a memorial is a lasting monument and a tribute to a person's life, perhaps a final gift to someone dearly loved, it is important to choose it carefully.

Hasty decisions made while still in great distress frequently result in later regrets, so it can be sensible to wait - and to spend time on selecting a suitable design.

Selecting a Memorial Mason

You may wish to use a company recommended by a friend or relative, or you may need to look around. Whichever you do, it is generally advisable to use one which specialises in memorial masonry.

They should understand stone and so be able to give you reliable advice as to whether the stone you are choosing is suitable for the type of memorial you require - and for the area in which it is to be fixed. Weather, pollution and surrounding vegetation can have an effect on this.

We have public & products liability insurance of £5 million, employee liability insurance of £10 million and we also give a guarantee of the stability of our memorial.

All our memorial fixers have been accredited by BRAMM to use the Code of Working Practice in fixing safe memorials. Ask us for proof of this. (Certificates are at our head office).

General: Cemeteries and churchyards generally have regulations governing the kinds of memorials, and sometimes also the inscriptions and ornamentation, they will allow. These vary from place to place and so need to be checked before any choice is made.

Cremation: There are often special areas for the burial of cremated remains. Some just have a central memorial commemorating all those buried nearby. In others, headstones or plaques can be erected on the individual plots. Again, the reputable memorial mason should have full details.

Obtaining Permission

Before a memorial may be erected in a churchyard or cemetery written permission has to be obtained from its management. We complete all the necessary paper work for you and arrange for it to be sent to the relevant department. All we require is the relevant fee, paid by cheque or cash to take with paper work.

The Initial Enquiry

It is important to obtain a written estimate clearly setting out full details of the memorial you are considering - and all the costs involved. The estimate should include the memorial itself (with full details as to size, material etc.), the lettering, any ornamentation and finishes, the secure installation of the memorial on a proper foundation and the cemetery or churchyard fees and VAT.

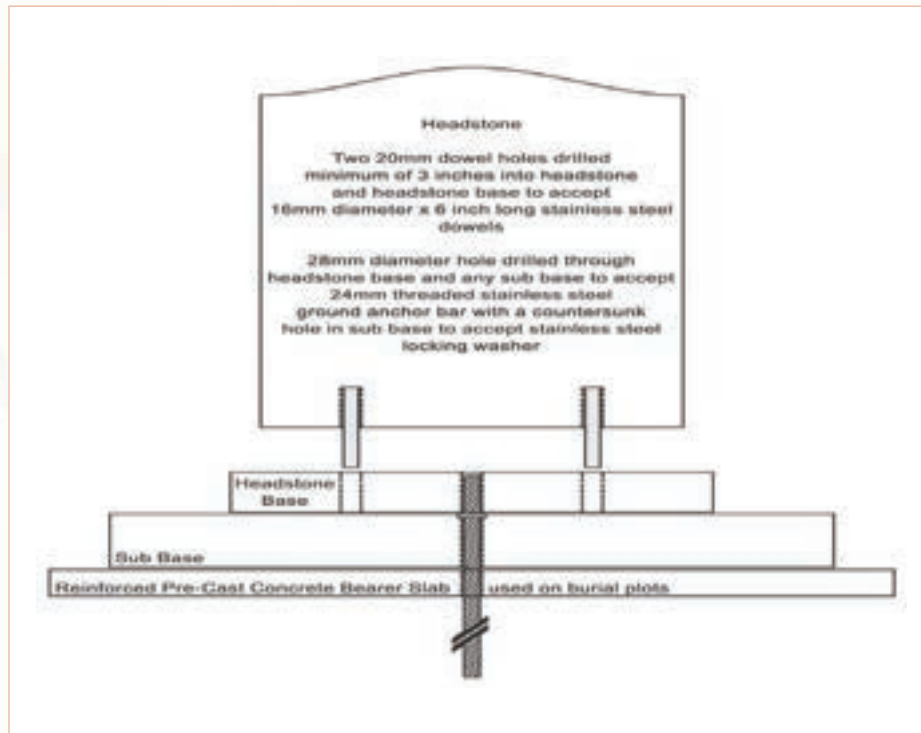
Please note: lettering and ornamentation can be hand carved, sand blasted or machine cut. These options and the different types of stone available, all vary in price. If you obtain estimates from more than one company, do check them carefully to make sure you really are comparing like with like.

Placing the Order

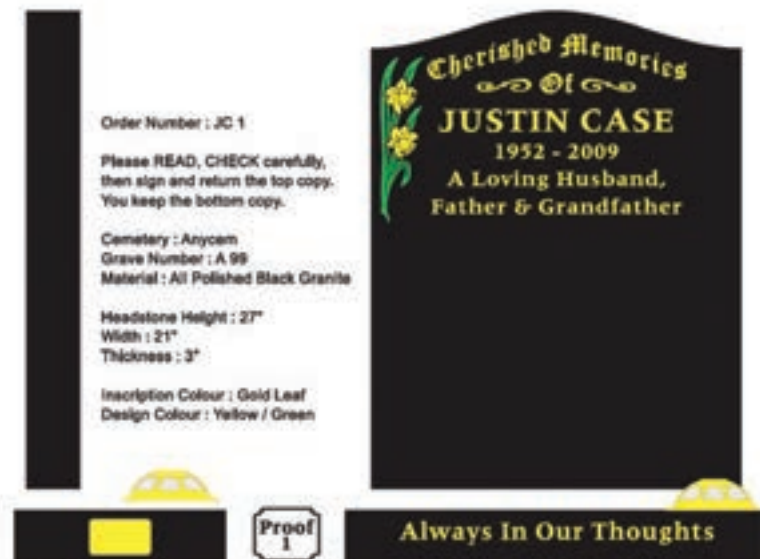
When you place the order you will be asked to pay a 50% deposit, plus any cemetery or church fee, with the balance of the agreed price payable within 30 days of final completion. Before signing to confirm your order it is important to check it thoroughly.

Be particularly careful that the wording and spelling of the inscription, and any dates, are shown correctly. Any alterations should be confirmed immediately and in writing. All new memorials will have a full coloured proof within 7-10 days of signing the order form and paying the deposit. **Please take time to read the proof thoroughly, we require you to return it to us**

with your signature. Once signed any alterations will be charged for (Do Not Sign The Proof Until You Are Satisfied With It). Providing we supply the memorial with the exact details that have been signed for on the proof we takes no responsibility for any errors. (Any Errors Will Be Rectified At Your Expense) Please note: Unless you give definite written instructions to the contrary, the layout of the inscription will be left to the letter carver. The availability of the materials, the complexity of design and the condition of the ground will affect the time the memorial will take to complete.



Proof Example



This print out proof is correct and I wish for you to supply the memorial

Signed *

The Materials

Memorials can be supplied in a variety of materials.

Granite

Available in a wide variety of colours. Granite is the hardest material used for making a Memorial and is virtually unaffected by the weather. The texture of Granite lends itself to polishing which brings out the true beauty of the material.

In recent years many multi-coloured Granites have become available, whilst these are unarguably attractive, it has to be said that many do fade somewhat after time in the cemetery. Lettering is usually incised with a Gilded finish.

Ornamentation on Granite is normally achieved by sandblasting the design into the polished surface. Alternatively, designs can be achieved by hand engraving into the polished surface. We employ craftsmen that produce all types of ornamentation including the more complicated 'shaded' effect designs that take longer to do than the single tone designs.

Marble

White in colour with a fine-rubbed finish. Marble suffers badly from attack by acid rain which eats away at the surface causing it to go sugary in texture. Once this erosion process has started the memorial gets very dirty.

Lettering should be incised, with pinholes drilled in the bottom and lead beaten in then finished flush with the surface. This is labour intensive work and therefore expensive compared to other lettering finishes, but, this type of inscription should last 40 – 50 years or more when done in the correct manner. Ornamentation on Marble is normally carved, due to the materials relative 'softness'.

Slate

Usually either charcoal grey or green/grey in colour with a semi-polished finish. Lettering should be incised and finished in Gold leaf.

However, lettering is easily read even if no colouring or gilding is applied. Slate weathers well. However, some slate can be prone to splitting in the direction of it's bedding. Ornamentation on Slate is normally carved, due to the materials relative 'softness'.

Yorkstone / Sandstones

Light Brown/Yellow in colour with a fine-rubbed finish. These take on a weathered appearance quite quickly once in the cemetery. Lettering should be incised and is usually painted Black. Ornamentation on Yorkstone / Sandstones is normally carved, due to the materials relative 'softness'.

Responsibility for Memorials

It is important to remember that it is you and not the cemetery or churchyard management, who is responsible for the maintenance of your memorial. If it should become dilapidated or unsafe, steps may be taken to lay it down or remove it. It is therefore wise to arrange for it to be regularly maintained - and insured.

Maintenance

We offer a maintenance scheme, payable on an annual basis. Terms will vary but will generally include regular cleaning and checking. Minor problems may be corrected but more major ones will be brought to your attention.

Memorial Insurance



It is always advisable to insure a memorial against damage, vandalism and theft - and to make sure the cover takes effect immediately the stone is fixed in the cemetery or churchyard. PLEASE ASK US FOR A BROCHURE.

Stoneguard Insurance is offered through Bridge Insurance brokers and The Royal & Sun Alliance and is available from us.

Stoneguard safeguards your Memorial and covers the cost of repair or replacement if it is defaced or damaged over the years. It is a sad reflection of today's society that many memorials suffer wanton

vandalism. And these attacks are not restricted to grand or elaborate memorials; often the simplest family stones are the target of malicious attacks or are accidentally damaged. Whilst it is impossible to prevent this distressing possibility STONEGUARD ALL RISKS Insurance can ensure that any damage can be put right very quickly - even to total replacement of the Memorial.

Claim Examples

What happened	Where	Claim paid
Falling tree	Surrey	£2,034.00
Accidental damage	Sunderland	£560.00
Storm: blown over	Essex	£1,927.00
Stolen statue	Manchester	£1,382.00
Lawnmower impact	Hampshire	£768.00
Staining	Birmingham	£684.00
Vandalism	Devon	£6,093.00
Graffiti	Glasgow	£419.00

Your guide to: *Inscriptions*

Here are some inscription suggestions.

Headings

In Loving Memory Of	In Memory Of
In Ever Loving Memory of	Entered Into Rest
In Loving Memory of	In Affectionate Memory Of
Cherished Memories of	Treasured Memories
In Ever Loving Memory of	In Cherished Memory Of
Sacred To The Memory of	Cherished Memory Of
Treasured Memories of	Pray For
With Love We Remember	Of Your Soul; Pray For the Repose for
Precious Memories of	The Repose Of The Soul Of
In Memory of	In Sweet Memory Of
To The Memory of	Everlasting Memories Of
In Affectionate Memory of	Precious Memories Of
Remembered Always	Fondest Memories Of
Lovingly Remembered	

Relationships

A Dear Husband, Father & Grandfather
A Beloved Husband, Dad & Grandad
A Loving Wife, Mother & Nan
A Devoted Wife, Mam & Gran
The Dearly Loved Wife of
Our Darling Daughter
A Devoted Son

Details

Died 16th June 2010, Aged 99 Years.
Passed Away 22nd November 2009, Aged 55 Years
12.5.1925 ~ 25.11.2010
Born 15th January 1950, Died 15th January 2010, Aged 60 Years.
1925 ~ 2010
Who Died 1st June 2010, Aged 55 Years.
Who Passed Away 22nd November 2009, Aged 55 Years.

Your guide to: *Inscriptions*

Here are some Verse suggestions.

Sadly Missed (11 letters)

Greatly Loved & Sadly Missed (23)

Always In Our Thoughts (19)

Remembered With A Smile (20)

Forever In Our Thoughts (20)

Gone From Us But Not Forgotten (25)

Always In Our Thoughts Forever In Our Hearts (37)

Peace Perfect Peace (17)

Reunited (8)

Rest In Peace (11)

Gone Are The Days We Used To Share
But In Our Hearts You're Always There (57)

At Rest (6)

On Earth One Gentle Soul The Less
In Heaven One Angel More (46)

Memory Is A Golden Chain
That Binds Us Till We Meet Again (47)

To Live In The Hearts Of Those We Love
Is Not To Die (40)

Gone Is The Face We Love So Dearly
Silent The Voice We Love To Hear (53)

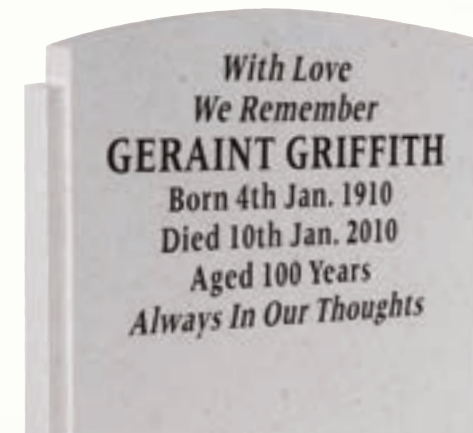
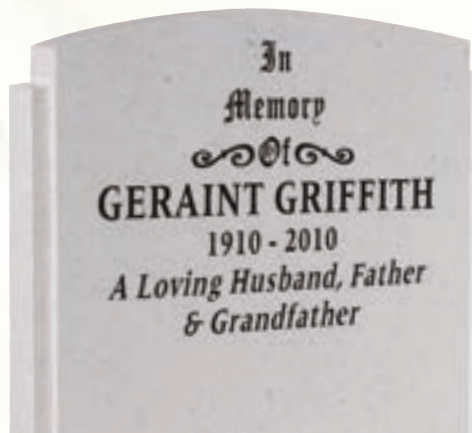
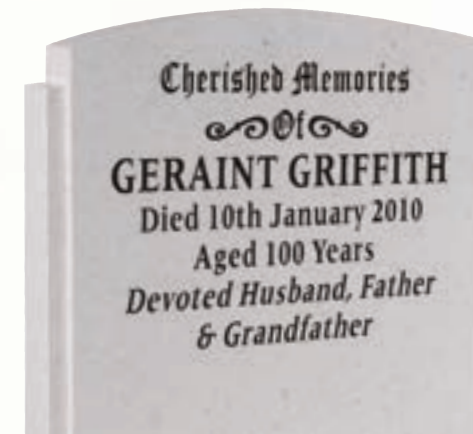
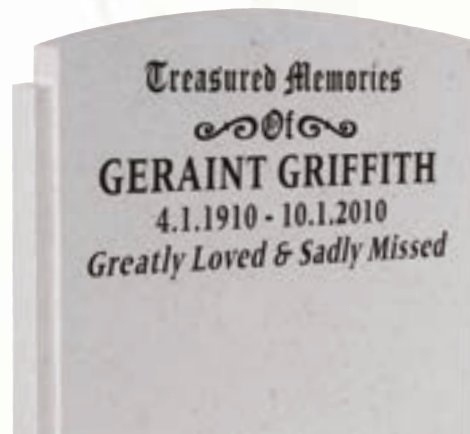
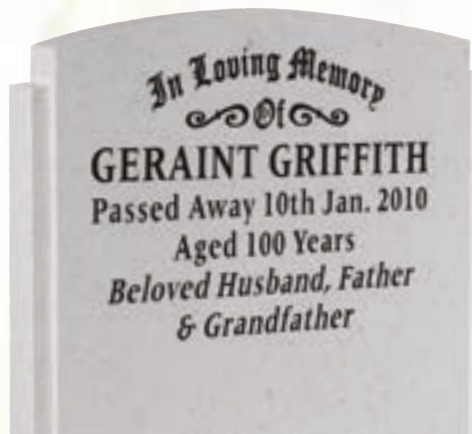
Those We Love Don't Go Away
They Walk Beside Us Every Day (45)

Sweet Are The Memories That Never Fade (32)

God Took You From Our Home
But Never From Our Hearts (42)

Your guide to: *Inscriptions*

Here are some inscription examples.



Your guide to: *Inscriptions*

Here are some inscription examples.

A Ray Of Sunshine Came And Went
A Beautiful Treasure Only Lent
In God's Keeping Quietly Sleeps
This (Son/daughter) We Loved But Could Not
Keep

Age Will Not Dim Her Loving Face
Her Sparkling Eyes And Happy Face
She Fell Asleep And Left Me Sad
I Will Never Forget The Mother I Had

Always Ready To Do Her Best
With A Heart So True And Tender
She Devoted Her Life To Those She Loved
And Those She Loved Remember

An Angel Took Our Flower Away
It Needed So Much Care
But Some Day God Will Tell Us
Why To Us It Seems Unfair

Angels In Heaven
All Robed In White
Were Playing One Day
In The Garden Of Light
And Jesus Came Smiling
And Said To His Band

"Here's Another Playmate, Take (Name's Hand)"

Farewells Were Left Unspoken
You Gently Slipped Away
You Left Many Happy Memories
That Will Never Fade Away

Gentle Jesus Up Above
Give Our Baby All Our Love
Plant Kisses On Our Baby's Cheek
Tell Him They Are His To Keep

Goodbye To You Dear (Relative)
You Deserve Eternal Rest
You Cared So Much For Everyone
And Always Did Your Best

Her Nature Was Loving And Giving
Her Heart Was Made Of Gold
And To Us Who Truly Love Her
Her Memory Will Never Grow Old

I Have Lost, Heaven Has Gained
The Most Wonderful Dad This World Contained
There's Just One Thing That Makes Me Glad
God Chose You To Be My Dad

There's A Place In Our Hearts, Mam
You Visit Every Day
It Gives Us A Warm Feeling
That You Are Never Far Away

What She Suffered She Told So Few
She Did Not Deserve What She Went Through
Tired And Weary She Made No Fuss
But Tried So Hard To Stay With Us

Your guide to: *Inscriptions*

Here are some inscription examples.

When We Are In Need Of Comfort
We Walk Down Memory Lane
There We See You Smiling
We Talk With You Again
And As We Wander Slowly Back
We Seem To Hear You Say
"Don't Grieve, Don't Cry, My Family.
We'll Meet Again Some Day"

Your Painful Days Are Over
Your Restless Nights Have Passed
God Took You In His Arms
And Whispered "Peace At Last"

Your Photo Stands In Pride Of Place
A Lovely Smile Lights Up Your Face
You Always Seem To Be So Near
How I Wish That You Were Still Here

We Never Ask For Miracles
But Today Just One Would Do
To See Our Front Door Open
And Our Dearest Mum Walk Through

No One Knew The Pain She Bore
Beneath The Smile She Always Wore
A Loving Memory Dearer Than Gold
A Mother Whose Worth Can Never Be Told

We Miss His Smile, His Kindly Ways
With Him We Spent Many Happy Days
We'll Miss Him When We Need A Friend
On Him We Always Could Depend

You Went Away So Suddenly
We Did Not Say Goodbye
But We Can Never Be Parted
Precious Memories Never Die

Thinking Of You, My Love
But That Is Nothing New
I Thought About You Yesterday
And The Day Before That Too
I'll Think About You Tomorrow
And As The Years Come And Go
I'll Think About You Forever
Because I Loved You So

Two Extra Stars Are In The Skies
I Know They Are My Mother's Eyes
Looking Down Upon Her Fold
Remembering Memories Wrapped In Gold

Each Day We Think About You
And Realise You Are Gone.
We Can't Explain The Emptiness
That Life Has Now Become.
They Say That Time's A Healer
But We Are Not Too Sure.
For Every Time We Think Of You
We Miss You More And More

Every Day In Some Small Way
We Miss You More Than Words Can Say
In Our Hearts You Will Always Stay
Loved And Remembered Every Day

God Saw You Were Getting Weary
The Hill Too Steep To Climb
He Put His Arms Around You
And Whispered "Peace Be Thine"

Your guide to: *Inscriptions*

Here are some inscription examples.

How Constantly We Think Of You
 With Hearts And Eyes That Fill
 The Love In Life We Had For You
 In Death Grows Stronger Still
 Let The Winds Of Love Blow Softly
 And Whisper For You To Hear
 We Love And Miss You Sadly
 As It Dawns Another Year

I Cannot Bring The Old Days Back
 When We Were All Together
 But Memories Keep Me Close To You
 And Memories Last Forever

If Roses Grew In Heaven Lord
 Then Pick A Bunch For Us
 And Place Them With Our Loved One's Arms
 And Tell Them They're From Us

In The Quiet Of The Evening
 I Sit And Think Of You
 I Open Up My Memory Book
 Of The Things We Used To Do
 And As I Turn The Pages
 My Eyes Are Filled With Tears
 For, Although I Have My Memories
 I Can't Hold Back The Tears

Memory Is A Loving Thing
 It Lasts The Longest Day
 It Can Never Be Spent
 Never Be Lent
 Never Be Taken Away

Those Who Have A Mother
 Cherish Her With Care
 For You Never Know The Heartache
 Till You See The Vacant Chair

Memories Are Like Keepsakes
 We Treasure All Life Through
 But Mine Are Very Special
 Because They Are Of You

No Matter Where I Go
 No Matter What I Do
 I'll Cherish The Memories Of Yesterday
 And The Laughs I Shared With You

Our Hearts Are Filled With Memories
 Which We Gather Through The Years
 All The Happy Times We Shared
 And Treasured Souvenirs

Sad Are The Hearts That Loved You
 Sad Are The Tears That Fall
 But Living Our Lives Without You
 Is The Saddest Part Of All

Your guide to: *Inscriptions*

Here are some inscription examples.

Take Her In Your Arms Lord
Guide Her Through The Storm
Sit With Her In Sunshine
And Let The Wind Blow Warm
Play Her Favourite Music
And When You See Her Smile
Tell Her That We Love Her
And She's Thought Of All The While

The Happy Hours We Once Enjoyed
How Sweet Their Memory Still
But Losing You Has Left A Place
This World Could Never Fill

The World May Change From Year To Year
And Friends From Day To Day
But Sweet Memories Of You
Will Never Fade Away

Thoughts Go Back To Happy Days
When We Were All Together
The Family Chain Is Broken Now
But Memories Last Forever

To Hear Your Voice, To See You Smile
To Sit And Talk To You A While
To Be Together In The Same Old Way
Would Be My Dearest Wish Today

To Us He Was Someone Special
Someone Set Apart
His Memory Will Live Forever
Engraved Within Our Hearts

A Beautiful Memory, Dearer Than Gold
Of A Father Whose Worth Can Never Be Told
There's A Place In My Heart No-one Can Fill
I Miss You, Dad, And Always Will

A Golden Heart Stopped Beating
Two Smiling Eyes At Rest
God Broke Our Hearts To Prove To Us
He Only Takes The Best

A Special Smile, A Special Face
In Our Hearts, A Special Place
Memories Are A Gift To Treasure
Ours Of You Will Last Forever

Although Our Loved Ones Are Out Of Sight
They Are Never Out Of Mind
For They Are Cherished In The Hearts
Of The Ones They Left Behind

Although We're Not Together
We Will Never Be Apart
Because You Have That Special Place
Right Here Within My Heart

Beautiful Memories Treasured Forever
Of Happy Years Spent Together
Life Is Eternal, Love Will Remain
In God's Own Time, We Will Meet Again

By The Old Rugged Cross
You Sit With A Smile
Waiting For Those, Who Have Left For A While
And Those You Have Left
With Their Grief And Their Loss
Will Meet You One Day
By That Old Rugged

Your guide to: *Inscriptions*

Here are some inscription examples.

Did The Sun Shine A Little Brighter?
Was The Sky A Deep Blue?
Or Was It Just A Better World Mam
When We Shared Our Lives With You?

Do Not Stand At My Grave And Weep.
I Am Not There. I Do Not Sleep.
I Am A Thousand Winds That Blow.
I Am The Diamond Glints On Snow.
I Am The Sun On Ripened Grain.
I Am The Gentle Autumn Rain.
When You Awaken In The Morning's Hush
I Am The Swift Uplifting Rush
Of Quiet Birds In Circled Light.
I Am The Soft Star That Shines At Night.
Do Not Stand At My Grave And Cry;
I Am Not There. I Did Not Die.

Two Smiling Eyes Stopped Smiling
A Golden Heart Stood Still
We Don't Know Why God Took You
And Guess We Never Will
He Only Lent You To Us
Then Came And Took You Back
To Us You Were So Precious
Your Life Was Full Of Fun
A Caring, Loving Brother
A Darling Little Son

Put Your Arms Around Her Lord
Kiss Her Smiling Face
She Was A Special Friend
Who Can Never Be Replaced

There's A Bridge Of Happy Memories
From Here To Heaven Above
I Know We Share That Bridge, Mam
It's Called The Bridge Of Love

Those Who Leave Us For A While
Have Only Gone Away
Out Of A Restless, Careworn World
Into A Brighter Day
Where There Will Be No Partings
And Time Is Not Counted By Years
Where There Are No Trials Or Troubles
No Worries, No Cares, No Tears

We Never Lose The Ones We Love
For Even Though They're Gone
Within The Hearts Of Those Who Care
Their Memory Lingers On

I Wish I Could See You, Mam
For Just A Little While
I Wish I Could Hug You
And See Your Lovely Smile
But Wishing Gets Me Nowhere
And Longing Is In Vain
So I Will Hold You In My Heart
Until We Meet Again



© GMC01



© GMC02



© GMC03



© GMC04



© GMC05



© GMC06



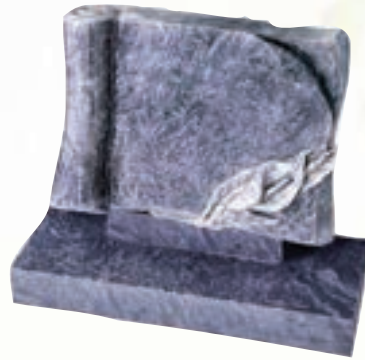
© GMC07



© GMC08



© GMC09



© GMC10



© GMC11



© GMC12



© GMC13



© GMC14



© GMC15



© GMC16



© GMC17



© GMC18



© GMC19



© GMC20



© GMC21



© GMC22



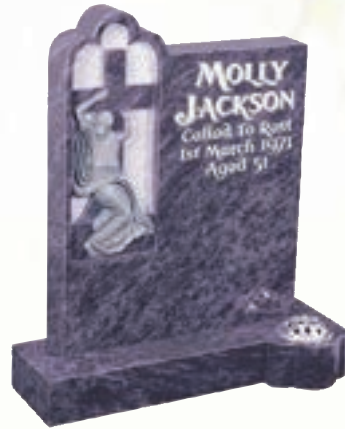
© GMC23



© GMC24



© GMC 25



© GMC 26



© GMC 27



© GMC 28



© GMC 29



© GMC 30



© GMC 31



© GMC 32



© GMC33



© GMC34



© GMC35



© GMC36



© GMC37



© GMC38



© GMC39



© GMC40



© GMC41



© GMC42



© GMC43



© GMC44



© GMC45



© GMC46



© GMC47



© GMC48



© GMC49



© GMC50



© GMC51



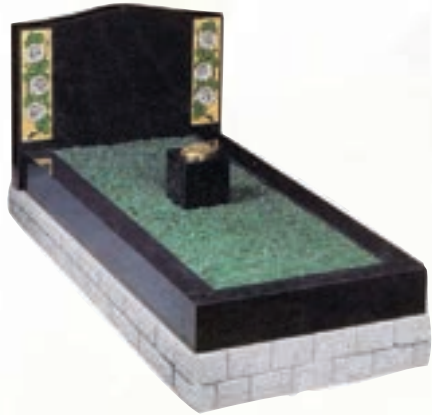
© GMC52



© GMC53



© GMC54



© GMC 55



© GMC 56



© GMC 57



© GMC 58



© GMC 59



© GMC 60



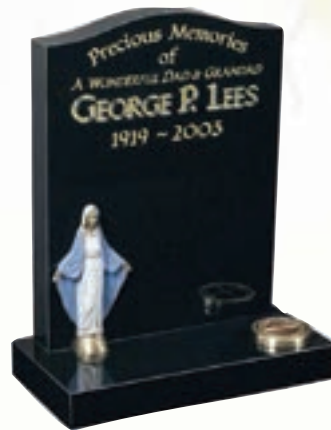
© GMC 61



© GMC 62



© GMC 63



© GMC 64



© GMC 65



© GMC 66



© GMC 67



© GMC 68



© GMC 69



© GMC 70



© GMC71



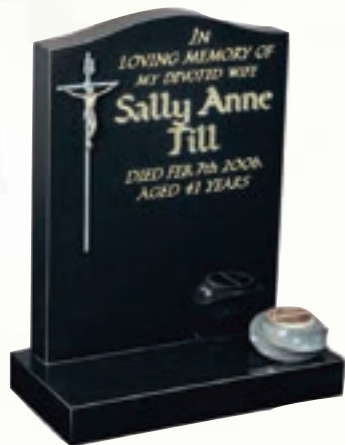
© GMC72



© GMC73



© GMC74



© GMC75



© GMC76



© GMC77



© GMC78



© GMC79



© GMC80



© GMC81



© GMC82



© GMC83



© GMC84



© GMC85



© GMC86



© GMC 87



© GMC 88



© GMC 89



© GMC 90



© GMC 91



© GMC 92



© GMC 93



© GMC 94



© GMC95



© GMC96



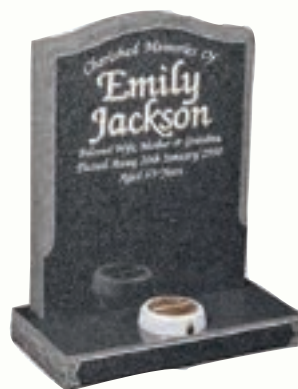
© GMC97



© GMC98



© GMC99



© GMC100



© GMC101



© GMC102



© GMC103



© GMC104



© GMC105



© GMC106



© GMC107



© GMC108



© GMC109



© GMC110



© GMC 111



© GMC 112



© GMC 113



© GMC 114



© GMC 115



© GMC 116



© GMC 117



© GMC 118



© GMC119



© GMC120



© GMC121



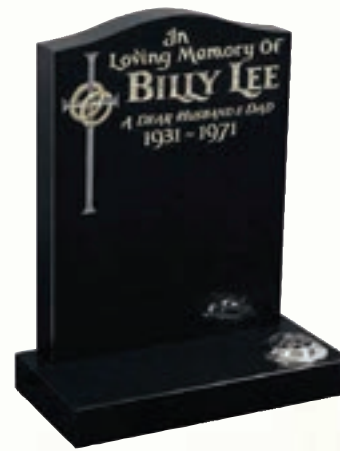
© GMC122



© GMC123



© GMC124



© GMC125



© GMC126



© GMC 127



© GMC 128



© GMC 129



© GMC 130



© GMC 131



© GMC 132



© GMC 133



© GMC 134



© GMC135



© GMC136



© GMC137



© GMC138



© GMC139



© GMC140



© GMC141



© GMC142



© GMC 143



© GMC 144



© GMC 145



© GMC 146



© GMC 147



© GMC 148



© GMC 149



© GMC 150



© GMC151



© GMC152



© GMC153



© GMC154



© GMC 155



© GMC 156



© GMC157



© GMC158



© GMC159



© GMC160



© GMC161



© GMC162



© GMC163



© GMC164



© GMC165



© GMC166



© GMC168



© GMC169



© GMC170



© GMC171



© GMC172



© GMC173



© GMC174



© GMC175



© GMC 176



© GMC 177



© GMC 178



© GMC 179



© GMC 180



© GMC 181



© GMC 182



© GMC 183



© GMC184



© GMC185



© GMC187



© GMC188



© GMC189



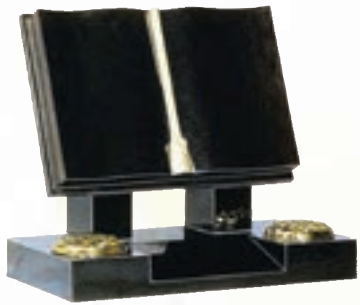
© GMC190



© GMC192



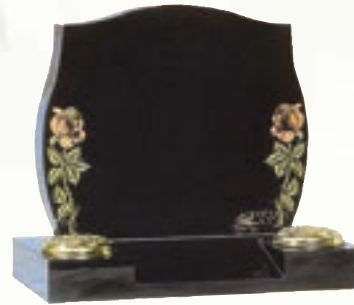
© GMC194cr



© GMC 195cr



© GMC 196cr



© GMC 197cr



© GMC 198cr



© GMC 229



© GMC 230



© GMC 231



© GMC 232



© GMC 233



© GMC 234



© GMC 235



© GMC 236



© GMC 237



© GMC 240



© GMC 241



© GMC 242



© GMC 238



© GMC 239



© GMC 243



© GMC 244



© GMC 245



©GS1



©GS2



©GS3



©GS4



©GS5



©GS6



©TS1



©VS1



©VS2



©VS3



©VS4



©TS2



©VS5



©VS6



©VS7



©VS8



©TS2



©VS9



©VS10



©VS11



©VS12



©TS3



©VS13



©VS14



© GMC/EC1



© GMC/EC2



© GMC/EC3



© GMC/EC4



© GMC/EC5



© GMC/EC6



© GMC/EC7



© GMC/EC8



© GMC/EC 9



© GMC/EC 10



© GMC/EC 11



© GMC/EC 12



© GMC/EC 13



© GMC/EC 14



© GMC/EC 15



© GMC/EC 16



© GMC/EC17



© GMC/EC18



© GMC/EC19



© GMC/EC20



© GMC/EC21



© GMC/EC22



© GMC/EC23



© GMC/EC24



© GMC/EC 25



© GMC/EC 26



© GMC/EC 27



© GMC/EC 28



© GMC/EC 29



© GMC/EC 30



© GMC/EC 31



© GMC/EC 32



© GMC/EC 33



© GMC/EC 34



© GMC/EC 35



© GMC/EC 36



© GMC/EC 37



© GMC/EC 38



© GMC/EC 39



© GMC/EC 40



© GMC/EC 41



© GMC/EC 42



© GMC/EC 43



© GMC/EC 44



© GMC/EC 45



© GMC/EC 46



© GMC/EC 47



© GMC/EC 48



© GMC/EC49



© GMC/EC 50



© GMC/EC51



© GMC/EC 60



© GMC/EC 61



© GMC/EC 62



© GMC/EC 63



© GMC/EC 64



© GMC/EC 65



© GMC/EC 66



© GMC/EC 67



© GMC/EC 68



© GMC/EC 69



© GMC/EC 70



© GMC/EC 71



© GMC/EC 72



© GMC/EC 73



© GMC/EC 74



© GMC/EC 75



© GMC/EC 76



© GMC/EC 77



© GMC/EC 78



© GMC/EC 79



© GMC/EC 80



© GMC/EC 81



© GMC/EC 82



© GMC/EC 83



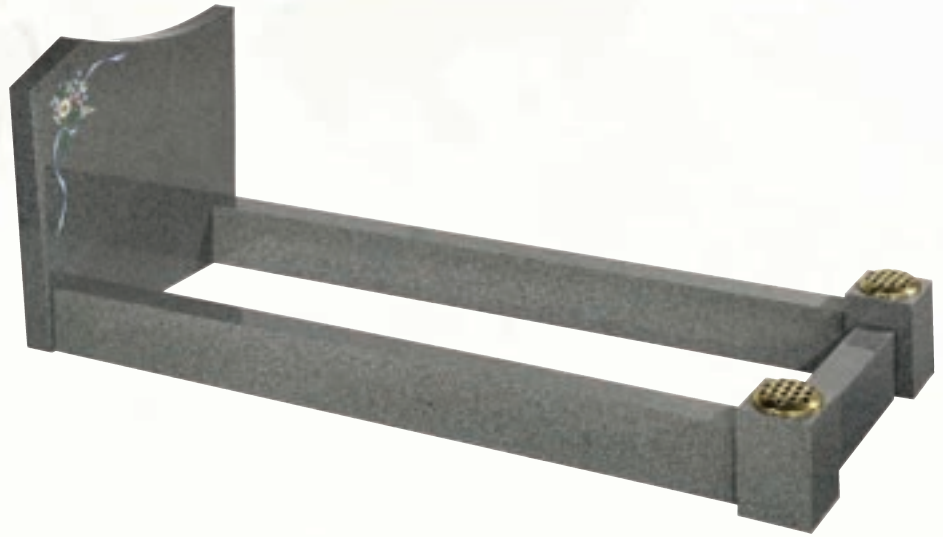
© GMC/EC 86



© GMC/EC 87



© GMC/EC 100



© GMC/EC 101



© GMC/EC 102



© GMC/EC 103



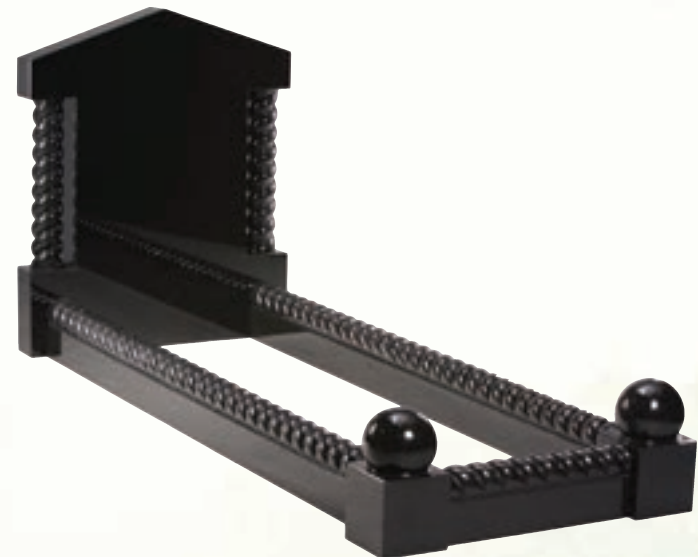
© GMC/EC 104



© GMC/EC 105



© GMC/EC 106



© GMC/EC 107



© GMC/EC 108



© GMC/EC 109



© GMC/EC 110



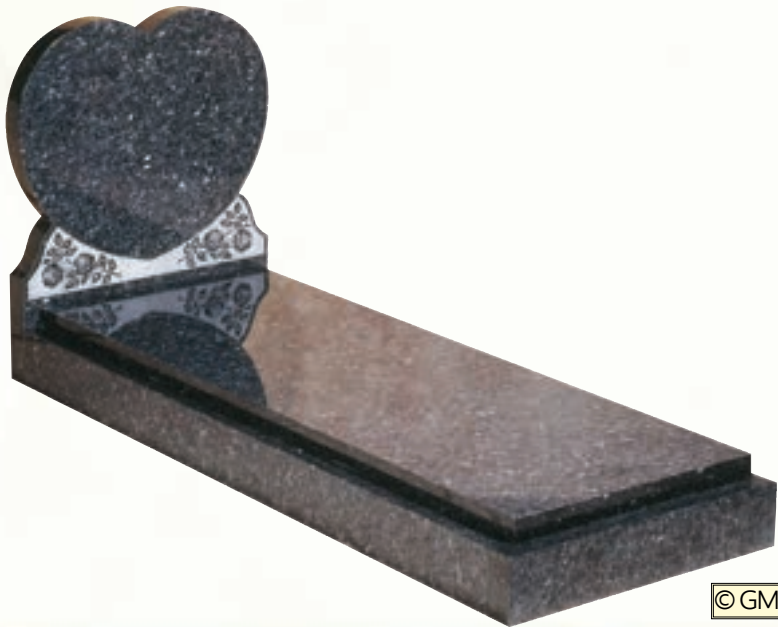
© GMC/EC 111



© GMC/EC112



© GMC/EC113



© GMC/EC114



© GMC/EC115



© GMC/EC 130



© GMC/EC 131



© GMC/EC 132



© GMC/EC 133



© GMC/EC 134



© GMC/EC 135



© GMC/EC 136



© GMC/EC 137



© GMC/EC 138



© GMC/EC 139



© GMC/EC 140



© GMC/EC 141



© GMC/EC 143



© GMC/EC 150



© GMC/EC 151



© GMC/EC 152



© GMC/EC 153



© GMC/EC 154



© GMC/EC 155



© GMC/EC 156



© GMC/EC 157



© GMC/EC 158



© GMC/EC 159



© GMC/EC 170



© GMC/EC 171



© GMC/EC 172



© GMC/EC 173



© GMC/EC 174



© GMC/EC 175



© GMC/EC 176



© GMC/EC 177



© GMC/EC 178



© GMC/EC 179



© GMC/EC 180



© GMC/EC 181



© GMC/EC 182



© GMC/EC 183



© GMC/EC 184



© GMC/EC 185



© GMC/EC 186



© GMC/EC 187



© GMC/EC 188



© GMC/EC 189



© GMC/EC 190



© GMC/EC 191



© GMC/EC 192



© GMC/EC 193



© GMC/EC 200



© GMC/EC 201



© GMC/EC 202



© GMC/EC 203



© GMC/EC 204



© GMC/EC 205



© GMC/EC 206



© GMC/EC 207



© GMC/EC 208



© GMC/EC 209



© GMC/EC 210



© GMC/EC 211



© GMC/EC 212



© GMC/EC 213



© GMC/EC 214



© GMC/EC 220



© GMC/EC 221



© GMC/EC 222



© GMC/EC 223



© GMC/EC 224



© GMC/EC 225



© GMC/EC 226



© GMC/EC 227



© GMC/EC 228



© GMC/EC 229



© GMC/EC 230



© GMC/EC 231



© GMC/EC 232



© GMC/EC 233



© GMC/D 1



© GMC/D 2



© GMC/D 3



© GMC/D 4



© GMC/D 5



© GMC/D 6



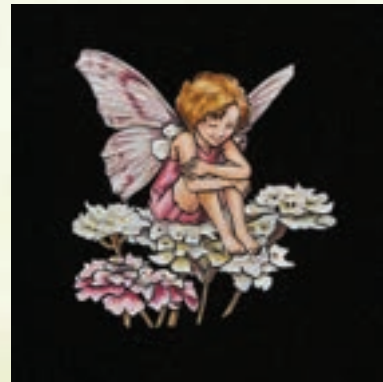
© GMC/D 7



© GMC/D 8



© GMC/D 9



© GMC/D 10



© GMC/EC 240



© GMC/EC 241



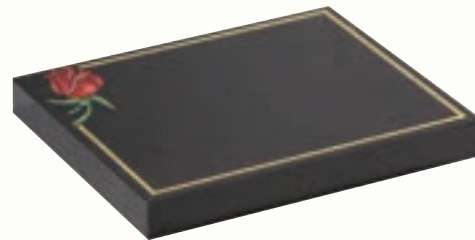
© GMC/EC 242



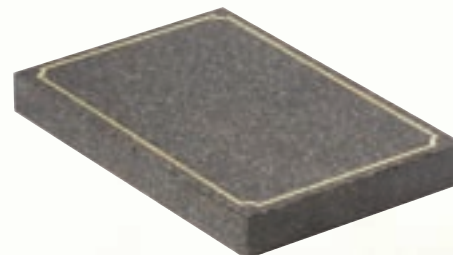
© GMC/EC 243



© GMC/EC 244



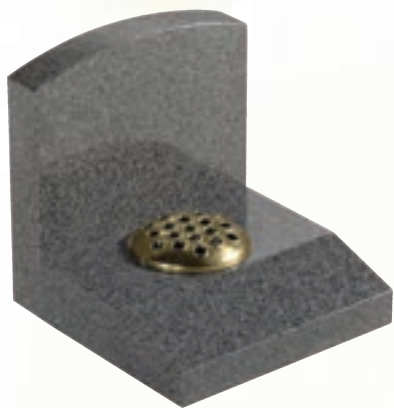
© GMC/EC 245



© GMC/EC 246



© GMC/EC 248



© GMC/EC 249



© GMC/EC 250



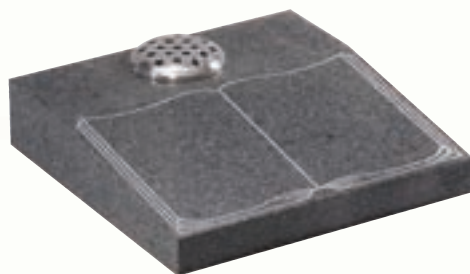
© GMC/EC 251



© GMC/EC 252



© GMC/EC 253



© GMC/EC 254



© GMC/EC 255



© GMC/EC 256



© GMC/EC 257



© GMC/EC 258



© GMC/EC 259



© GMC/EC 260



© GMC/EC 261



© GMC/EC 262



© GMC/EC 263



© GMC/EC 270



© GMC/EC 271



© GMC/EC 272



© GMC/EC 274



© GMC/EC 275



© GMC/EC 276



© GMC/EC 277



© GMC/EC 278



© GMC/EC 279



© GMC/EC 280



© GMC/D 20



© GMC/D 21



© GMC/D 22



© GMC/D 23



© GMC/D 24



© GMC/D 25



© GMC/D 26



© GMC/D 27



© GMC/D 28



© GMC/D 29



© GMC/D 30



© GMC/D 31



© GMC/D 32



© GMC/D 33



© GMC/D 34



© GMC/D 35



© GMC/D 36



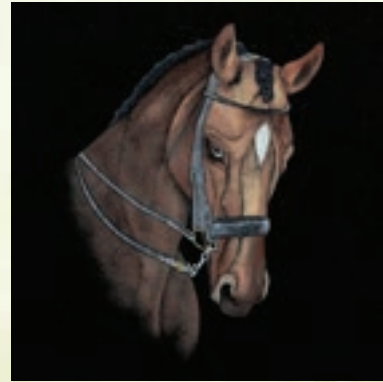
© GMC/D 37



© GMC/D 38



© GMC/D 39



© GMC/D 40



© GMC/D 41



© GMC/D 42



© GMC/D 43



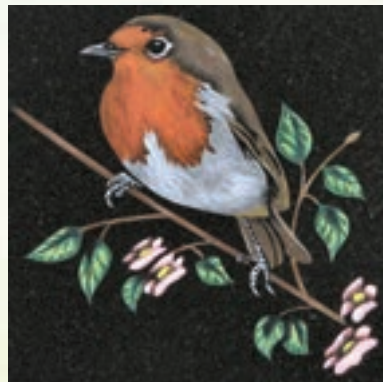
© GMC/D 44



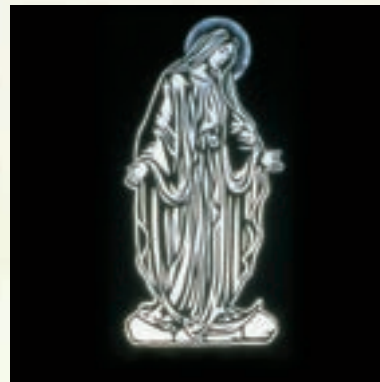
© GMC/D 45



© GMC/D 46



© GMC/D 48



© GMC/D 49



© GMC/D 50



© GMC/D 51



© GMC/D 52



© GMC/D 54



© GMC/D 55

Memorials - *Stone colours*

Memorials are available in many shapes, sizes, colours and materials.

In this brochure we have only shown you a small selection of memorials that are available from us. We can supply almost any type of memorial.

We have many different designs for you to choose or if you require we can design something especially for your family.

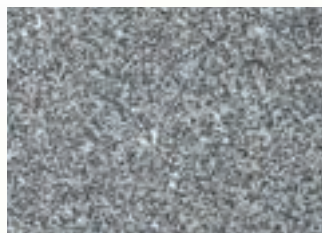
Below please see a selection of the colours that are available.



Black Granite



Blue Pearl



Cathay



Lavender Blue



Chinese Rustenburg



Emerald Pearl



Cats Eye



Karin Grey



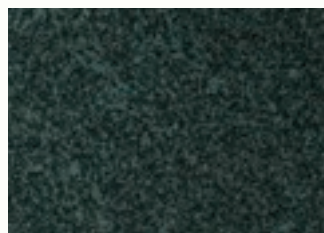
Indian Grey



Butterfly Blue



South African Dark Grey



Chinese Evergreen



Sera Grey



Oriental Light Grey



Paradiso

Memorials - *Stone types*

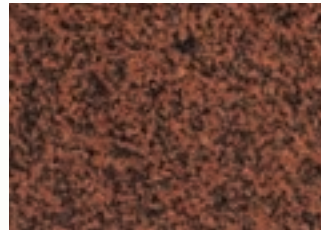
Below is a selection of the stone types that are available for your memorial.



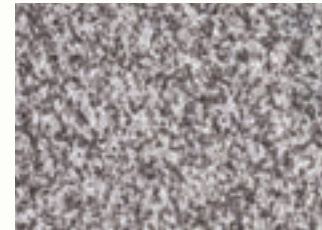
Imperial Green



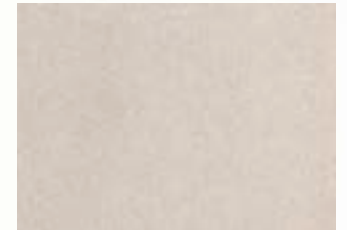
Ruby Red



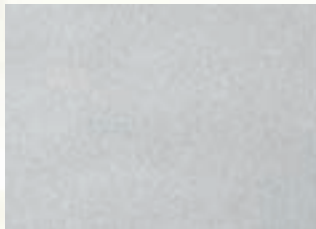
Balmoral Red



Cornish De Lank



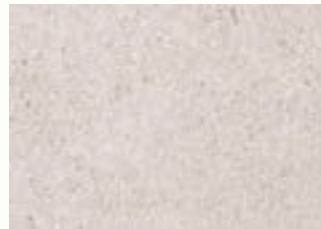
York Stone



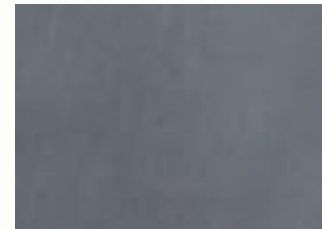
Serena Stone



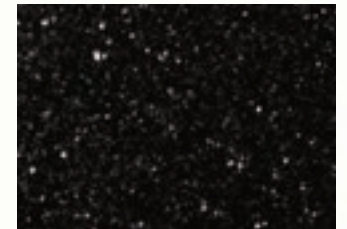
Crown Stone



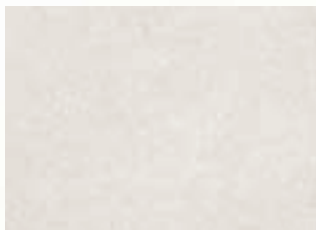
Nabresina



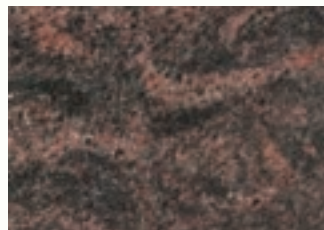
Blue / Black Slate



Star Galaxy



Portland Stone



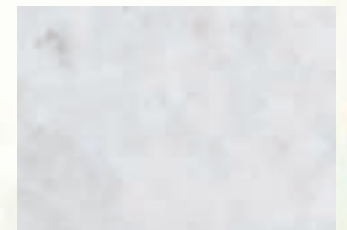
Aurora



Regal Black



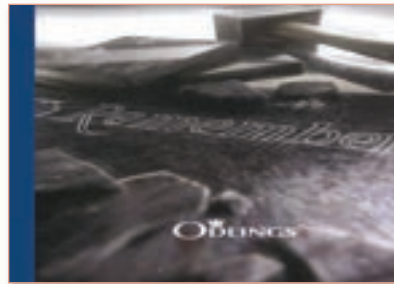
Impala Grey



White Carrara Marble

Available memorials

We can supply memorials from any of the following brochures. If you wish to see these brochures they are all available at our office or we can bring them to you. If you have seen a memorial on-line or in the cemetery please forward us a picture for us to give you a quotation. We specialise in designing personal bespoke memorials for you by sitting with you to discuss the shape, colour, and design.





**Griffith
Memorials**

Cemetery Road • Porth • Rhondda • CF39 0BL

Tel: 01443 684450

www.griffithmemorials.com