

GRIFFITH MEMORIALS

Cemetery Road, Porth. R.C.T. CF39 0BL

Top Quality Granite Memorials

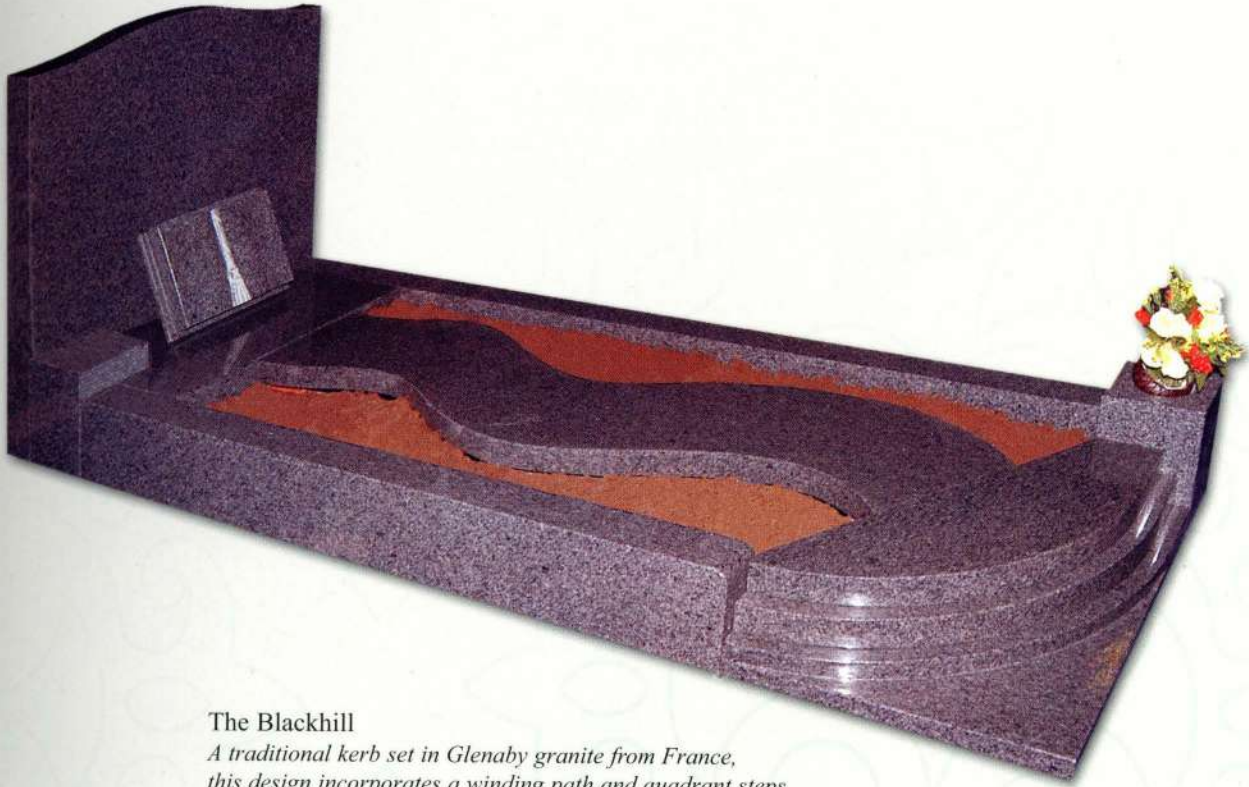
On Display At Our Modern And Comfortable
Indoor Showroom / Salesroom

Tel. : 01443 684450 Fax. : 01443 687631

Frank England

Reflections





The Blackhill

A traditional kerb set in Glenaby granite from France, this design incorporates a winding path and quadrant steps along with a token book for additional lettering.



The Hayton

A memorial in Multicolour Red granite from India, worked to replicate the smooth washed appearance of a pebble.



The Jay

Again rustic work combines with polishing and sandblasting to show this Aurora stone at its best.



The Rufford
Indian Black Galaxy granite which has a distinctive gold flecking is shown here with fully worked mouldings to give a traditional feel.





The Berwick
A pitched margin and splayed base give this relatively straightforward shape an individuality, the M.P. White granite is from India.



The Broughton
An ogee top memorial with moulded edge which can have a sanded finish as the Bahama Blue example or can be polished.



The Wheatley
Distinctive Blue Pearl granite from Norway has been shaped by hand to give a triple heart design with coloured floral ornamentation.



The Norske
*Himalayan Blue granite with a moulded edge
combined with varying finishes on the granite
to make an attractive stone.*



All memorial shapes and granites illustrated are interchangeable.



The Withern
A full memorial in Balmoral Red granite from Finland, a cover slab and vase detail at the foot and coloured rose design are incorporated in this stone.



The Lound
Himalayan Blue granite, traditionally shaped with additional lettering space offered by the splayed base, shown with a reconstituted marble dove.



The Richmond
A simple border line enhances the strong shape of this silver grey memorial from India.



The Haygarth

Amadeus granite is one of the most distinctive materials, it has been shaped here to combine a celtic cross and heart. The granite originates from Sweden.



All memorial shapes and granites illustrated are interchangeable.



The Burley
*Fluting & moulding shown to great effect
on this stunning Black granite memorial.*



The Fordham
*Black granite cross design with
celtic panels and splayed base.*



The Dunston
*A set of garden kerbs used to surround
this unusual Cats Eye granite heart.*



The Wilton

*Hand masoned rose design sweeps down
the face to give an elegance to this Indian Aurora stone.*



All memorial shapes and granites illustrated are interchangeable.



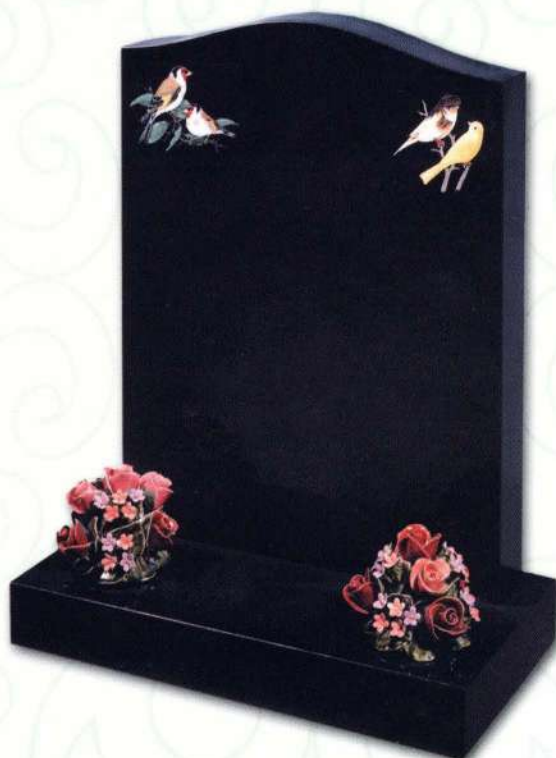
The Rasen
Emerald Pearl granite from Norway with a deeply sandblast carved rose motif and unusual base feature.



The Monkton
Hand carved tulips adorn this Black granite memorial.



The Westgate
Black granite with simple coloured roses.



The Wellow
A standard Black granite ogee shaped top embellished with hand painted birds, which can be replaced with any species or breed.



The Norton

*A stone combining many of the hand skills which are much requested today,
hand cushioned heart surrounded by the carved angel. Fully polished Ruby Red granite.*



All memorial shapes and granites illustrated are interchangeable.



The Blyth
A solid bronze cross is used to enhance this memorial shown in Blue Pearl granite from Norway.



The Blyton
A fully polished memorial shown in Black granite with recessed panel for family name or to incorporate an ornamentation.



The Kane
Indian Bahama Blue granite in a very popular shape, shown here with a coloured ornamentation.



The Langold
Hand carved roses surround a cross on this original design, Indian Mahogany granite.



The Ramsey

*A worked tree in Kerala Green & Himalayan Blue,
The bench is in M.P.White and the Kerala Green ledger
has a sunken Bahama Blue pond detail.*



All memorial shapes and granites illustrated are interchangeable.



The Morven
Fully polished Black granite with drop ogee shoulders and a shaded ornamentation.



The Thorne
Dramatic Paradiso granite from India with a deep sandblast tree 'growing' up the left hand side.



The Lindrick
A distinctive memorial with twin cushioned heart detail and a moulded edge shown in Bahama Blue granite.



The Headon
A simple ogee top is transformed by the addition of barrelled sides and a chamfered edge.



The Lenton

Norwegian Blue Pearl granite, the design of a Parachute Regiment badge can be altered to any other military design or to reflect any interest whatsoever.



All memorial shapes and granites illustrated are interchangeable.



The Cranwell
A small Black granite book memorial for cremations.



The Hammond
A heart shaped tablet which can have a flat or cushioned face in Indian Bahama Blue granite.



The Epworth
A book memorial with fully worked pages with hand worked cord & tassel, side vase in Bahama Blue granite.



The Croft
A splayed desk in Indian Bahama Blue with fully worked raised book on the face.



The Aberdeen

*A fully polished South African Dark Grey memorial
with fluted column sides and laurel engraved capping.*

All memorial shapes and granites illustrated are interchangeable.





The Anton
Sapphire Blue granite with coloured rose design gives an elegant detail to this attractively shaped headstone.



The Anderby
Glenaby granite from France with a natural pitched edge.



Vase Selection
A range of turned vases in various granites.



The Seaforth

A child's memorial utilising Indian Ruby Red granite with a coloured ornamentation and radiused kerbs.



All memorial shapes and granites illustrated are interchangeable.



The Castleton
A fully worked 3D teddy bear memorial incorporating a polished heart, Norwegian Blue Pearl granite.



The Panda
Painted detail added to the worked outline of this Black granite stone.



The Teddy Bear
Imperial Mahogany granite from the USA with pitched edges.



The Elephant
A child's memorial in French Glenaby grey additional lettering space is offered by the splayed base.

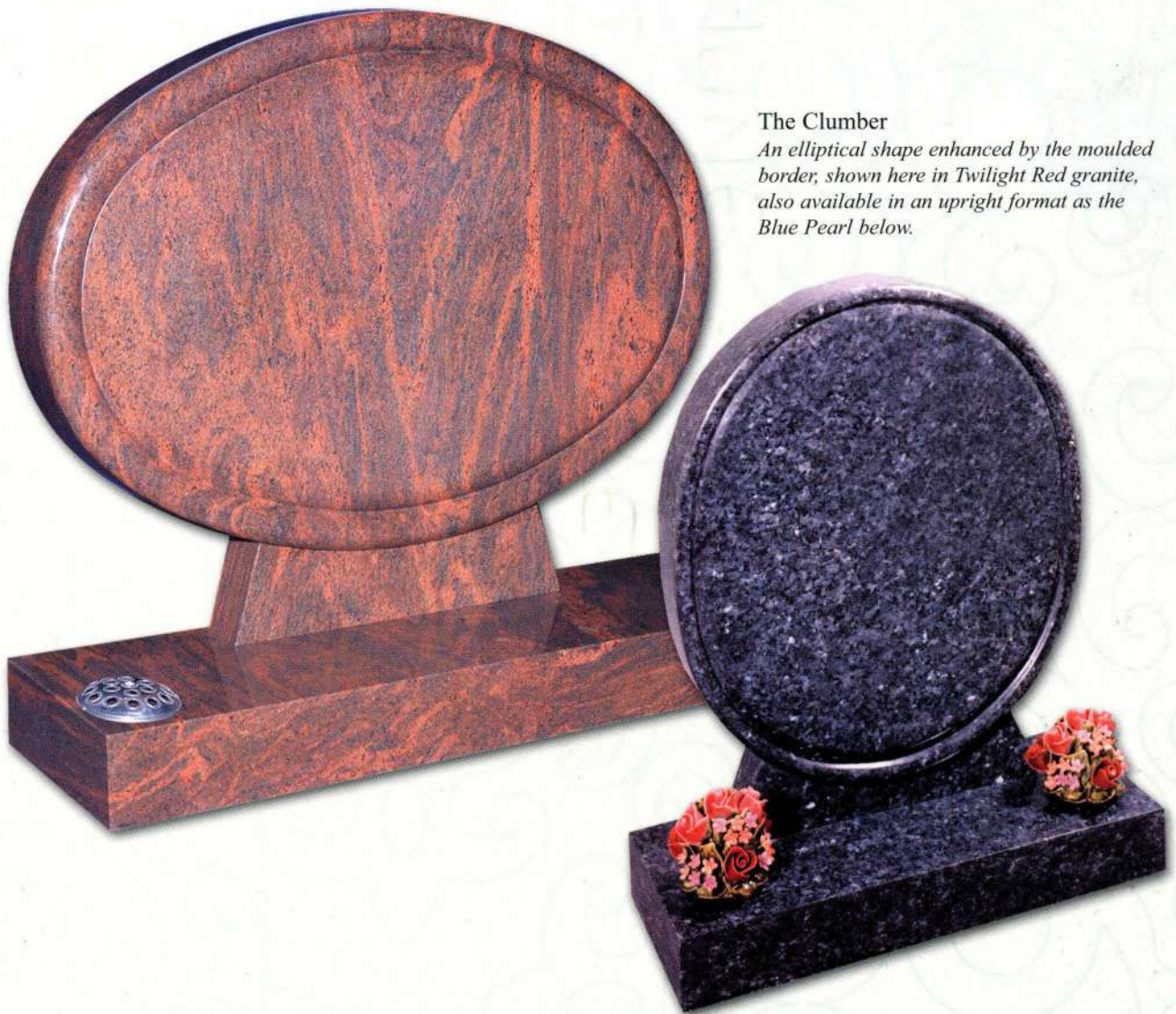
THOUGH THEIR SMILE HAS GONE FOREVER, AND THEIR
HANDS WE CANNOT TOUCH, WE SHALL NEVER LOSE
SWEET MEMORIES OF THE ONES WE LOVED SO MUCH...



Frank England

A memorial is a tribute, an ode to a life now ended, an everlasting remembrance of those that are forever in our thoughts, but no longer in our presence.

In addition to our extensive range of traditionally shaped memorials and various new soft cut designs, our craftsmen can also produce unique memorials to suit personalised requirements, thereby giving you an opportunity to remember your loved ones in a very special way...



The Clumber
An elliptical shape enhanced by the moulded border, shown here in Twilight Red granite, also available in an upright format as the Blue Pearl below.

All memorial shapes and granites illustrated are interchangeable.



The Morley

The dramatic Twilight Red from India has an intricate sandblast celtic design to complement the cross.

All memorial shapes and granites illustrated are interchangeable.





The Grange

Raw Silk granite from India.

The effect of this memorial is an opening scroll with recessed and polished face.



The Wiseton

A simple cross shape is revitalised with the chamfered edge, here using Indian Bahama Blue granite.



The Brook

Hand worked detail to the left of this stone gives an artistic effect on the polished Himalayan Blue granite.



The Middleham

A superb hand carved angel protruding from above a fully shaped heart with side vases makes for an elegant memorial shown in Ruby Red granite from India.



The Serlby

*A distinctive Blue Pearl heart with hand carved rose detail.
The shaped detail of the base allows for two flower containers.*



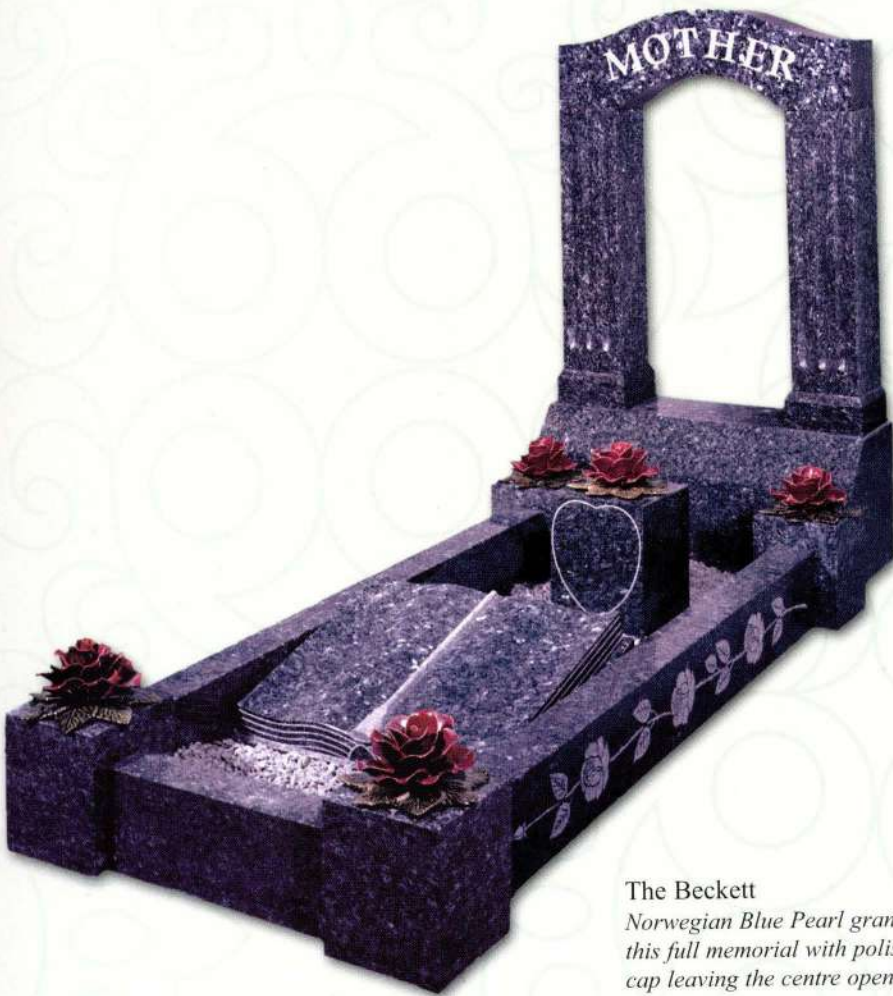
All memorial shapes and granites illustrated are interchangeable.



The Dove
 Deeply sandblast floral designs have been used to great effect on this Indian Paradiso stone.



The Clifton
 Kerala Green granite shown with twin headstones and a reconstituted marble figure.



The Beckett
 Norwegian Blue Pearl granite has been used for this full memorial with polished fluting and shaped cap leaving the centre open to accommodate a figure.



The Hampstead

An impressive heart memorial in Multicolour Red granite is enhanced by the moulded edge and shaped base.



All memorial shapes and granites illustrated are interchangeable.



The Bingham

A full memorial in Black granite with elegant hand carved roses at the shoulders, shown here with kerbs, ledger slab & turned vase, but also offered as a lawn memorial.



The Southwell

Recess moulding on the face of this stone gives a magnificent reflection to the Emerald Pearl granite.



The Redland

Kerala Green granite used to define the celtic cross and chamfered headstone on this beautiful stone.



The Auckland

A closed book design produced from two separate granites tooled with great accuracy transform this traditional shape, the detail of the top shows the impressive jointing and fully polished finish.



All memorial shapes and granites illustrated are interchangeable.



The Lumb
Himalayan Blue granite from India with a deep blasted and coloured floral decoration.



The Beck
All polished Norwegian Emerald Pearl granite is used to give this stable sloping book design a classic look.



The Collingham
Indian Paradiso granite with worked face to give raised polished scroll detailing.

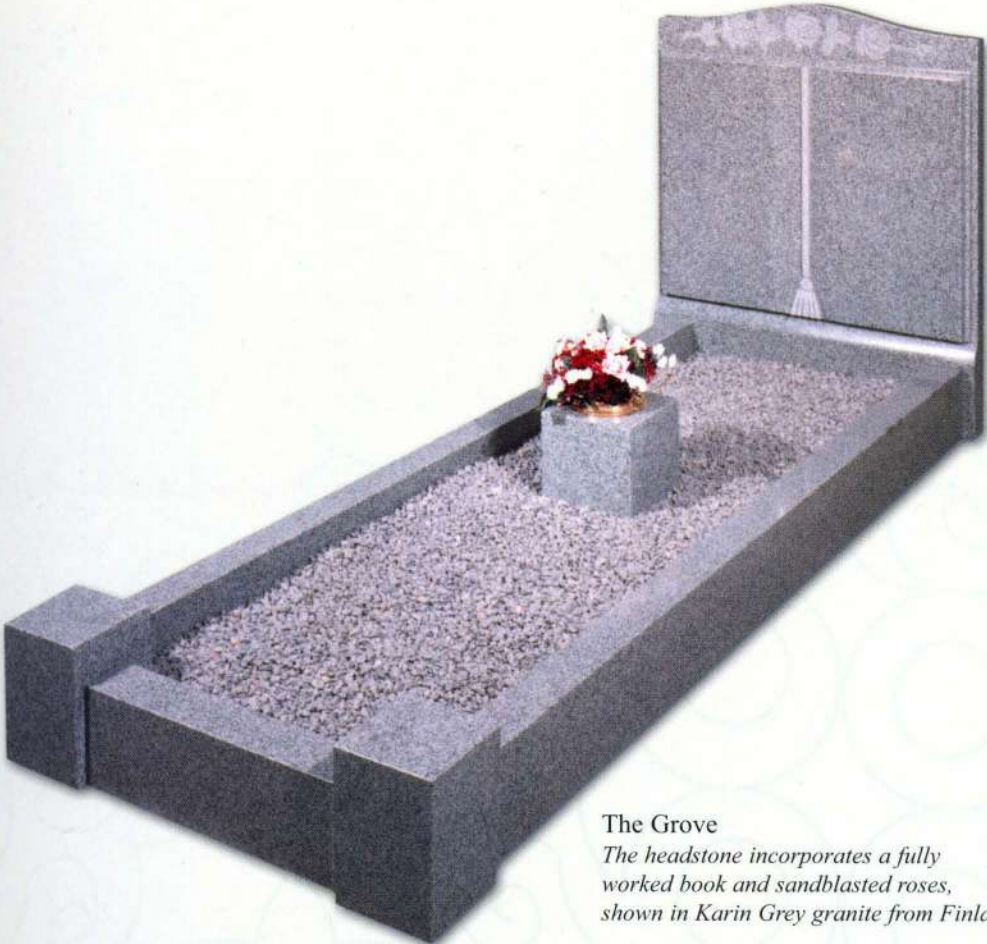


The Shire

An inspiring canopy set, shaped capping with barley twist columns utilising Kerala Green granite from India.



All memorial shapes and granites illustrated are interchangeable.



The Grove
The headstone incorporates a fully worked book and sandblasted roses, shown in Karin Grey granite from Finland.



The Tree of Life
Bahama Blue granite with distinctive moulding and shaping.



The Askham
Baltic Green granite from Finland has been used to show the detail of this traditionally shaped celtic cross.



The Oaks

Hand carved tree design with recessed face to give intricate detail, shown here in Kerala Green granite, from India.



All memorial shapes and granites illustrated are interchangeable.



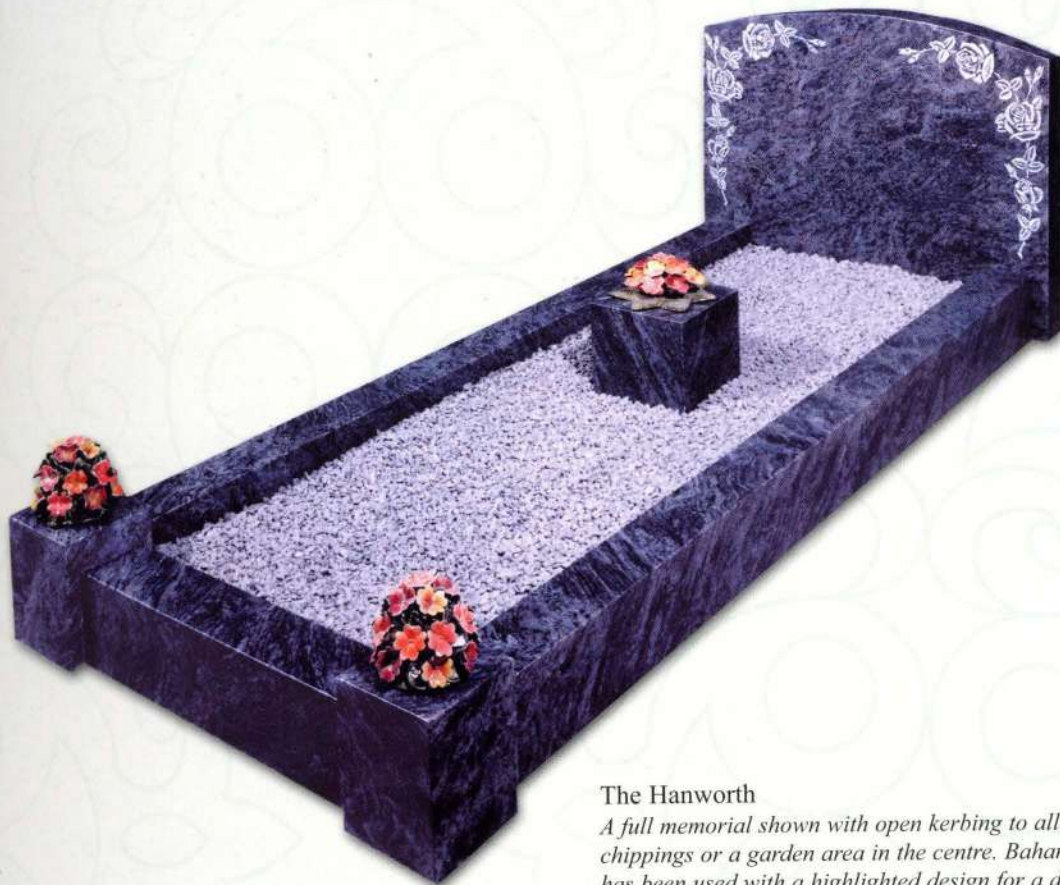
The Alford

Indian Bahama Blue granite given a contemporary look with fluted detail sweeping around the inscription panel.



The Kingfisher

Dark Grey granite from South Africa with a deep sandblast carved panel.



The Hanworth

A full memorial shown with open kerbing to allow for chippings or a garden area in the centre. Bahama Blue granite has been used with a highlighted design for a dramatic look.



The Thoresby
Polished fluting on this Ruby Red granite memorial give elegant lines and still allows for a large inscription.

All memorial shapes and granites illustrated are interchangeable.





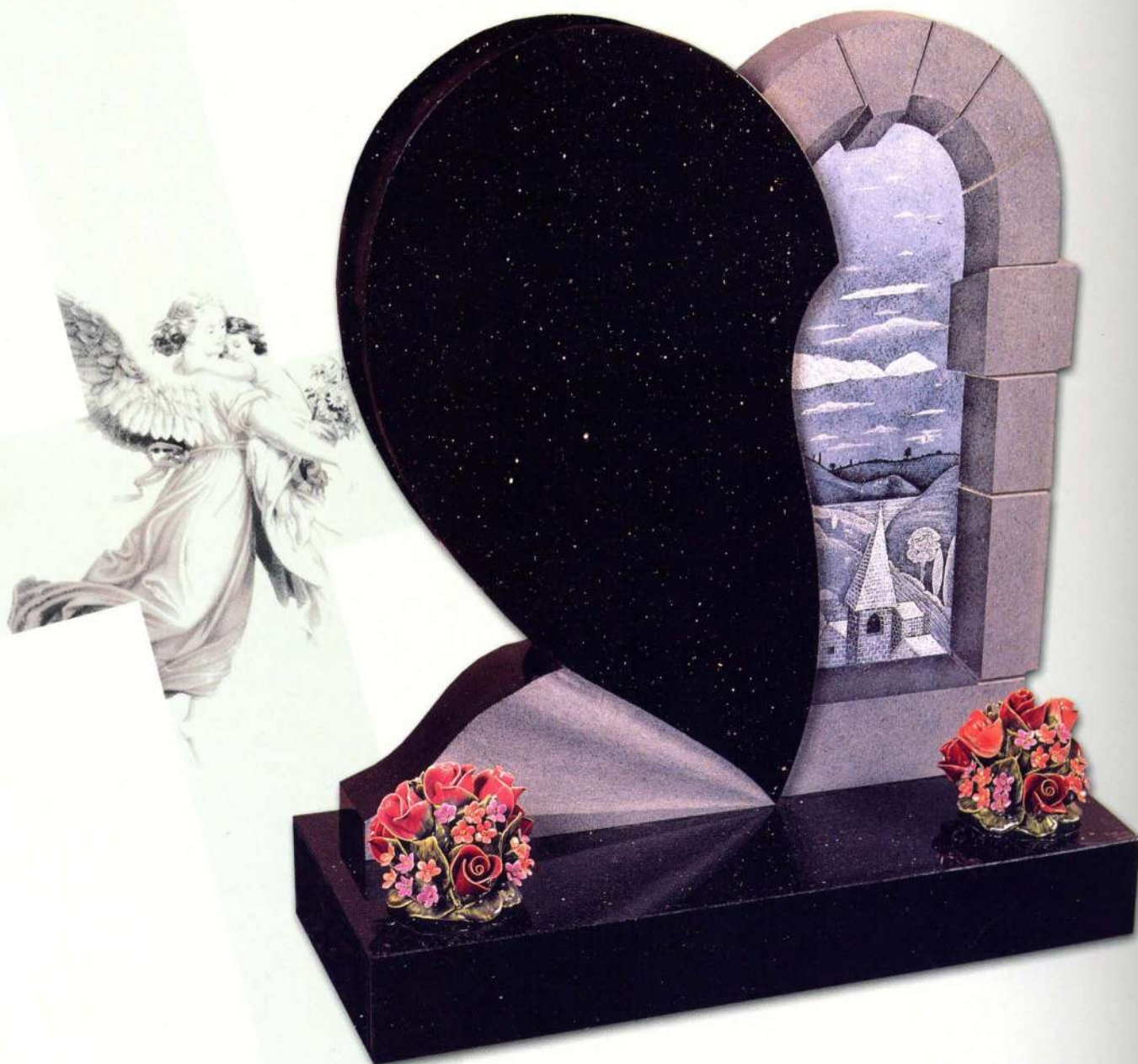
The Harper
A Light Himalayan Blue full memorial, polished faces with rustic edges and a centre vase.



The Wren
Rustic edges enhance the beauty of this Aurora granite from Scandinavia.



The Woburn
Fluting on both the headstone and base give a distinctive look to this Kerala Green memorial.



The Bardney

A heart memorial given an individual look with recessed right hand side and hand engraved scene, which can be amended or replaced to suit any requirement, all polished Black Galaxy.



All memorial shapes and granites illustrated are interchangeable.



The Belton
Black granite with a splayed base and delicate floral design.



The Coleby
A simple gold border has been added to this more traditional and very popular shape, in Kerala Green granite.



The Knaith
An open book memorial combined with kerbs and vases shown in Ruby Red from India.



The Somerley

A distinctive canopy memorial, enhanced by the use of two contrasting granites for its production, Imperial White and Regal Black both of Indian origin.



All memorial shapes and granites illustrated are interchangeable.



THE PISANI GROUP

Frank England

Bellmoor, Retford, Nottinghamshire DN22 8SG

Telephone : (01777) 708771

Fax : (01777) 860557

e-mail : fe.retford@pisani.co.uk

Dearnley, Littleborough, Lancashire OL 15 8NW

Telephone : (01706) 378468

Fax : (01706) 370174

e-mail : fe.dearnley@pisani.co.uk